

PrismaGlass



LOTUS

SISTEM GHILOTINĂ

LOTUS

SISTEM GHILOTINĂ



Un sistem de sticlă de ghilotină este un tip de sistem de sticlă sau aranjament de sticlă care permite ca suprafețe de sticlă în general mari să fie folosite ca ferestre sau uși care se pot deschide.

Acest sistem este un mecanism de deschidere a ferestrelor preferat în special în clădiri comerciale, hoteluri sau structuri mari.

Sistemul de sticlă ghilotină este ideal pentru ventilarea naturală a spațiului sau pentru utilizare ca deschideri de trecere pentru suprafețe mari de sticlă.

Facilitează tranziția între spațiile interioare și cele exterioare, mai ales în condiții de vreme frumoasă.

Sistemele de jgheaburi din aluminiu au devenit o alegere populară în designul modern al clădirilor. Atractia lor estetică și durabilitatea se numără printre motivele pentru care sunt preferate în multe proiecte de construcții. Ele oferă, de asemenea, potențialul de a economisi energie și de a crește confortul interior.

The guillotine glass system generally refers to a type of glass system or arrangement that allows large glass surfaces to be used as operable windows or doors. This system is a preferred glass opening mechanism, particularly in commercial buildings, hotels, or large structures.

The guillotine glass system is ideal for natural ventilation of the space or for use as large glass openings. It facilitates the transition between indoor and outdoor environments, especially in good weather conditions.

Aluminum guillotine systems have become a popular choice in modern building design. Their aesthetic appeal and durability are among the reasons they are preferred in many construction projects. Additionally, they offer the potential to increase energy efficiency and indoor comfort.





Toate culorile pe care le alegeți pot fi aplicate conform standardului de culoare RAL.

Colouring of your choice, according to the RAL colour standard.

Este extrem de rezistent la condiții meteorologice precum ploaie și vânt.

It is extremely resistant to weather conditions such as rain and wind.

Material // aluminiu 6063 T5, oțel inoxidabil și dintel.

Materials // 6063 T5 aluminum, stainless steel and derlin.

Sistemele de sticlă ghilotină facilitează procesul de curățare prin rotirea panourilor de sticlă pe o axă orizontală. Acest sistem face accesul la suprafețele de sticlă mai ușor și mai sigur. Nu este nevoie să coborâți sau să îndepărtați panourile de sticlă sau să ieșiți afară pentru a curăța.

Suprafețele interioare ale sticlei pot fi curățate cu ușurință atunci când sistemul este complet închis.

"Cleanable guillotine glass systems facilitate the cleaning process by rotating the glass panels on a horizontal axis. This system makes accessing glass surfaces easier and safer. There is no need to lower or remove the glass panels or go outside to clean.

The inner surfaces of the glass can be easily cleaned when the system is fully closed."





Când sistemul este în poziția închis, suprafața exterioară poate fi curățată prin deschiderea acesteia spre interior cu ajutorul brațului de sticlă din partea inferioară.

Sticla din mijloc poate fi deschisă după ce sticla de jos este în poziția deschisă, iar suprafața exterioară poate fi curățată.

Pentru ca sistemul să fie plasat din nou în poziția normală de deschidere și închidere, mecanismul de blocare trebuie rotit în poziția închis.

În timp ce sistemul este complet deschis, suprafața exterioară a geamului superior poate fi curățată.

While the system is in the closed position, the bottommost glass can be opened inwards using the lever to clean its outer surface.

The glass in the middle can be opened for cleaning its outer surface after the bottommost glass is opened in the open position.

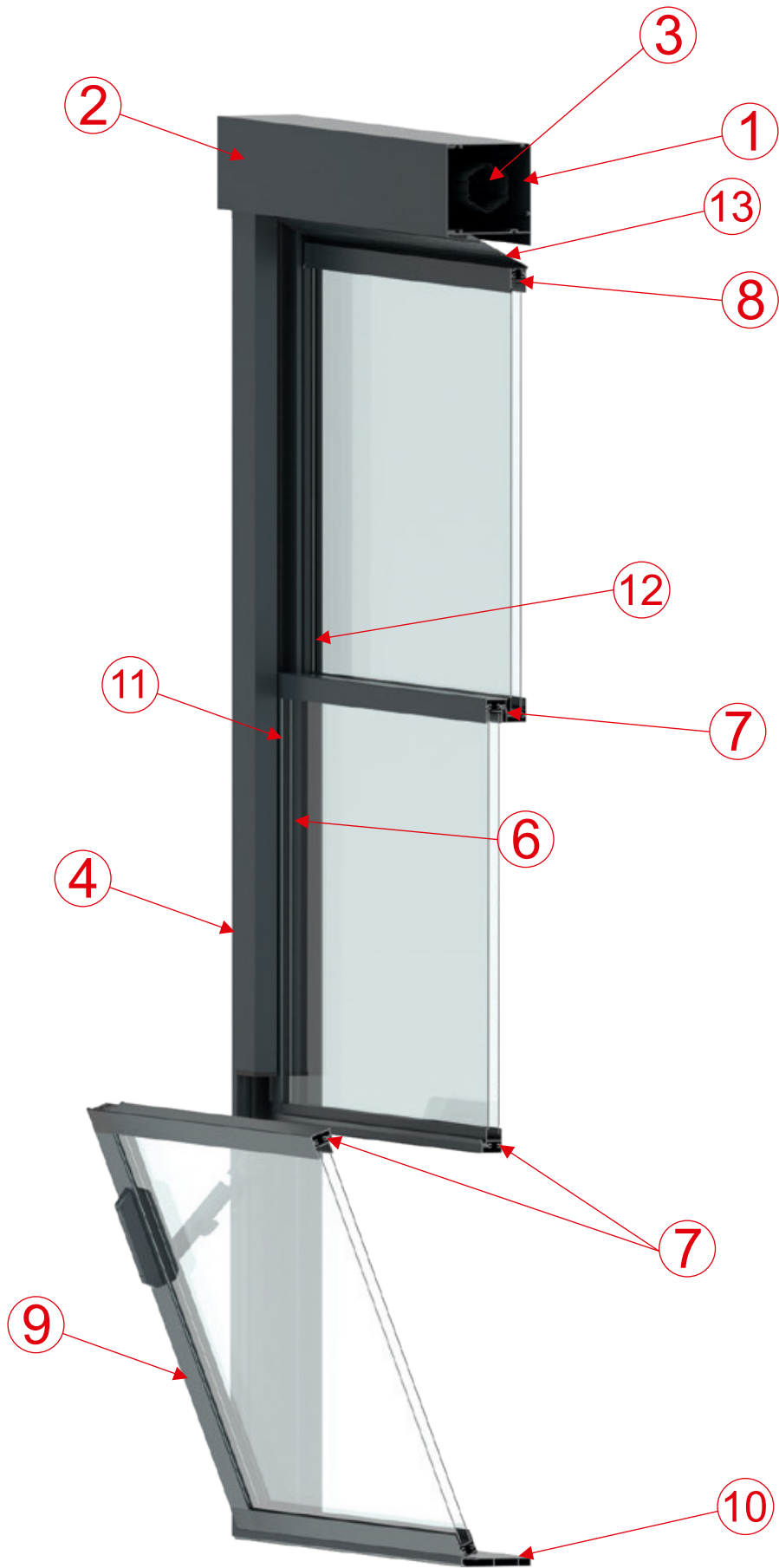
To return the system to its normal open and closed position, the locking mechanism must be closed.

When the system is fully open, the outer surface of the topmost glass can be cleaned.

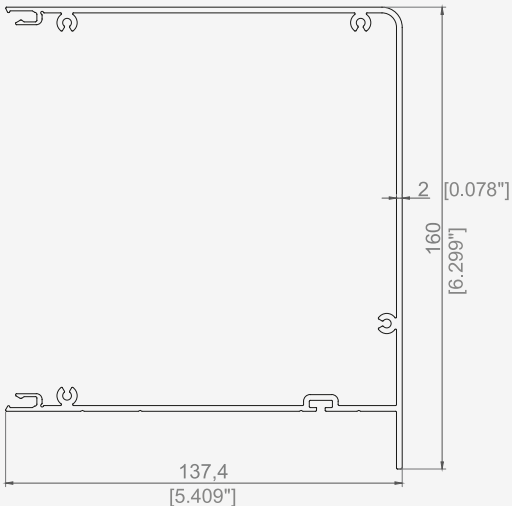








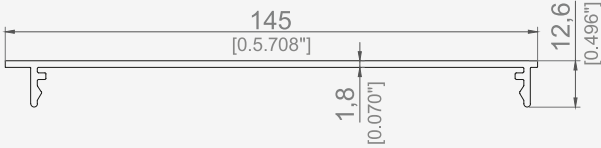
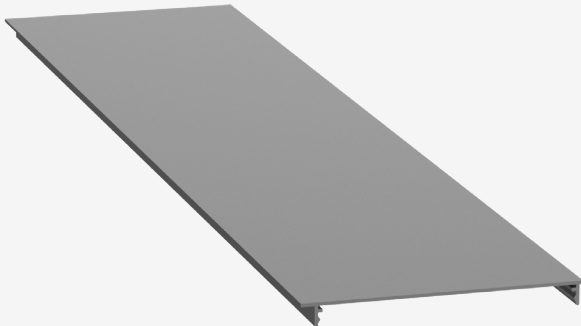
1



Motor Box Profile

Product Code	37272
Weight	2,700 kg/m 5,952 lb/m

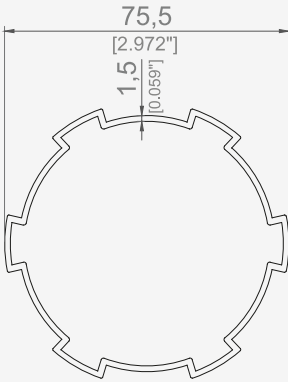
2



Motor Box Cover Profile

Product Code	37271
Weight	0,847 kg/m 1,867 lb/m

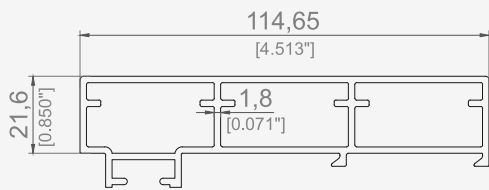
3



Motor Tube Profile

Product Code	5312
Weight	1,100 kg/m 2,425 lb/m

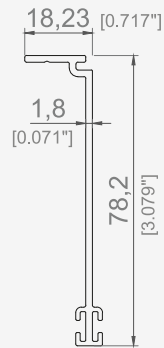
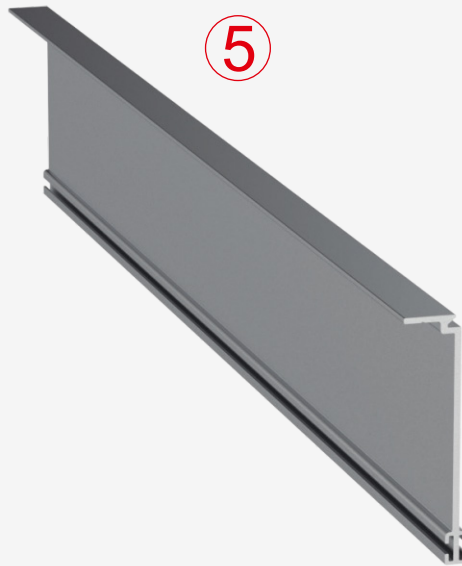
④



Side Rail Profile

Product Code	3570
Weight	1,772 kg/m 3,906 lb/m

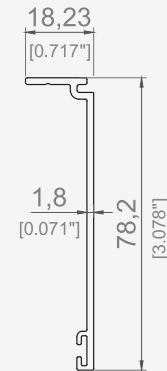
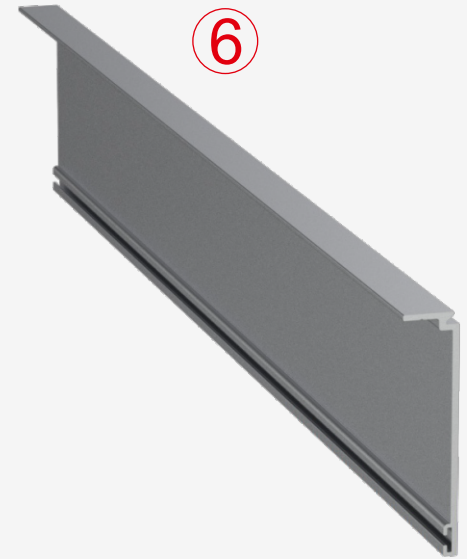
⑤



Side Rail Middle Profile

Product Code	3073
Weight	0,540 kg/m 1,190 lb/m

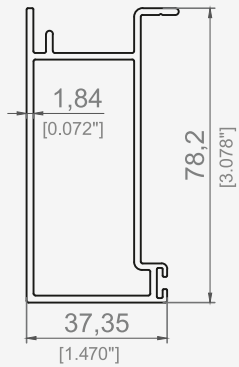
⑥



Side Rail Cover Profile

Product Code	3071
Weight	0,510 kg/m 1,124 lb/m

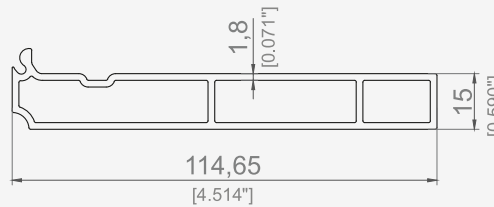
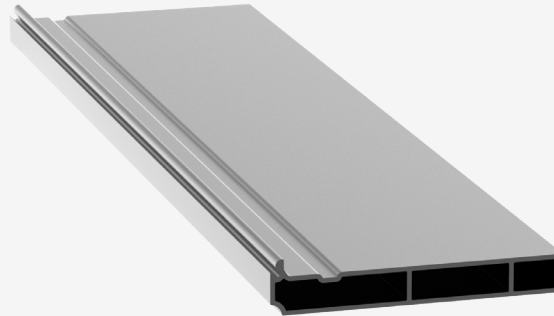
11



Side Rail Pillar Profile

Product Code	3072
Weight	1,170 kg/m 2,579 lb/m

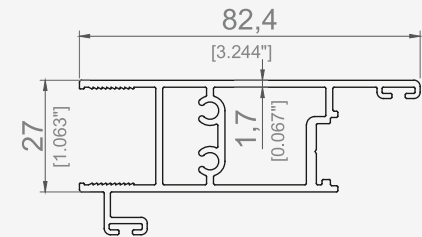
10



Sill Profile

Product Code	3066
Weight	1,400 kg/m 3,086 lb/m

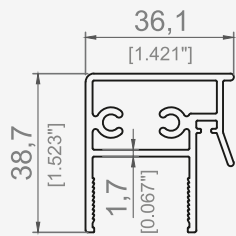
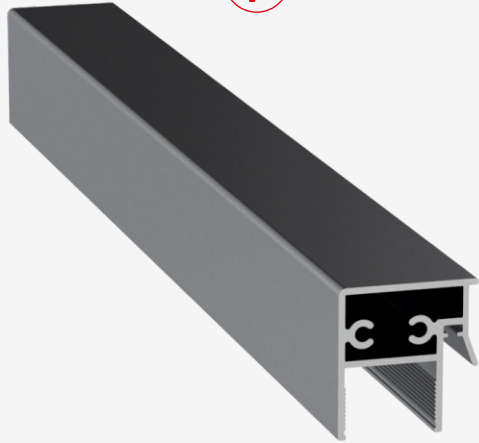
9



Fixed Glass Side Lock Profile

Product Code	3569
Weight	1,257 kg/m 2,771 lb/m

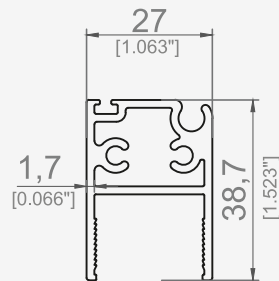
7



22mm Glass Panel Puller Profile

Product Code	3068
Weight	0,860 kg/m 1,896 lb/m

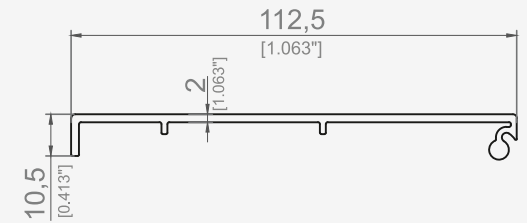
8



22mm Handrail Profile

Product Code	3067
Weight	0,800 kg/m 1,763 lb/m

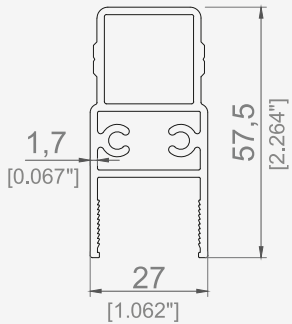
13



Handrail Cover Profile

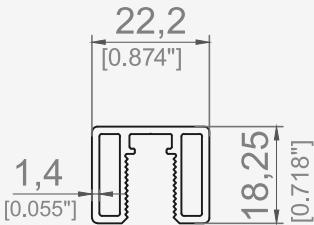
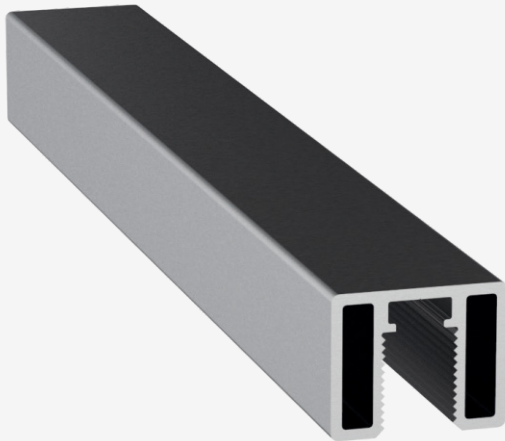
Product Code	3070
Weight	0,770 kg/m 1,697 lb/m

12



22mm Glass Panel Side Profile

Product Code	3064
Weight	1,030 kg/m 2,271 lb/m



8mm Glass Adapter

Product Code	3065
Weight	0,370 kg/m 0,8157 lb/m



Lotus Chain Accessories New Set
Code: LTS-1Y



Glass Corner Wedge

Code	LTS-8
Piece	2



Nailed Corner Wedge

Code	LTS-8
Piece	6



Fixed Corner Wedge Top

Code	LTS-8
Piece	2



Sewing Rail Nail Plastic

Code	LTS-8
Piece	2



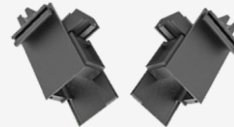
Joint Plastic

Code	LTS-8
Piece	2



Glass Fxng Plastic

Code	LTS-8
Piece	2



Glass Corner Wedge Bottom

Code	LTS-8
Piece	2



Plastic Plug

Code	LTS-8
Piece	20



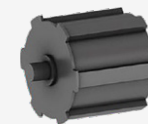
Base And Side Profile

Code	LTS-8
Piece	2



Chain Transfer Plastic

Code	LTS-8
Piece	2



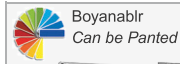
Pipe Head

Code	LTS-8
Piece	1



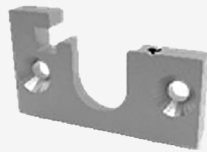
Profile Cover Plastic

Code	LTS-8
Piece	6



Tube Motor Cover

Code	LTS-1Y
Piece	2



Bearing Fastening

Code	LTS-1Y
Piece	1



Bearing Clamp

Code	LTS-1Y
Piece	1



Motor Box Sled

Code	LTS-1Y
Piece	2



Chain

Code	GYT-19
Piece	5 meters



Lotus Gear

Code	LTS-6
Piece	2



Lotus Espagnolette

Code	LTS-1Y
Piece	2



Chain Hanger Apparatus

Code	LTS-1Y
Piece	2



M4 Fiber Nut

Code	LTS-1Y
Piece	8



Lotus Arm

Code	LTS-5
Piece	2



Vasistas Scissors

Code	LTS-1Y
Piece	2



6001 Bearing

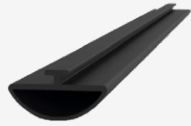
Code	LTS-1Y
Piece	1

Lotus Bolt Set

Code	LTS-1Y
Piece	1

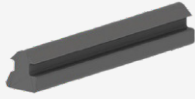


Lotus Chain Accessories New Set



Engine Box Seal

Code	GYT-28
Piece	75 Meters



Clamped Profile Bolt

Code	GYT-27
Piece	300 meters



67x800 Bristle Wick

Code	GYT-29
Piece	250 meters



ERS 120 NM Electronic Motor

Code	ERS-120NM-ELK
Piece	1



ERS Control

Code	ERS-809
Piece	1



